

### Kuwait | August 4, 2021

On Wednesday, overall market sentiment was negative, as all four major indices ended marginally lower. Premier Market Index declined 0.09% to close at 7,120.86 points, All-Share Index ended 0.08% lower and closed at 6,542.51 points, Main Market Index dropped 0.07% to end at 5,409.88 points, and BK Main 50 Index slipped 0.02% to settle at 5,698.87 points.

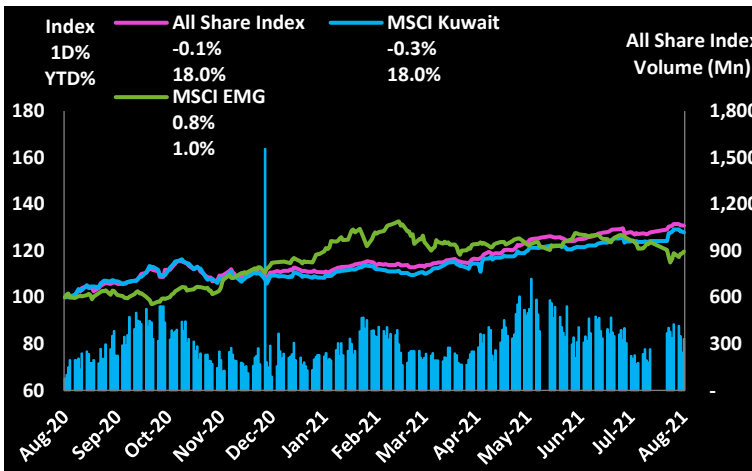
In the Premier Market Index, BOURSA continued to be the top percentage gainer with a gain of 6.92%. BPCG was the second-highest gainer with an increase of 1.69%. On the other hand, GBK was the top percentage loser with a loss of 2.10%, followed by AGLTY with a decline of 1.73%. The total value traded in the Premier Market Index was KWD 33 mln, and the volume was 82 mln shares. In the Main Market Index, MAZAYA, which declined 1.95%, witnessed the highest traded value of KWD 6.1 mln as well as the highest volume of 67.7 mln shares. ARZAN, which increased 3.01%, recorded the second-highest traded value of KWD 3.6 mln and the third-highest volume in the index of 21.1 mln shares.

### Economic / Company News

- [AUB - Financial Results for 2Q21](#)
- [KIB - Financial Results for 2Q21](#)
- [NINV - Financial Results for 2Q21](#)
- [ALQURAIN - Financial Results for 1Q21](#)
- [MAZAYA - Financial Results for 2Q21](#)
- [AAYAN - Financial Results for 2Q21](#)
- [NCCI - Financial Results for 2Q21](#)
- [EKTITAB - Financial Results for 2Q21](#)
- [AMAR - Financial Results for 2Q21](#)
- [BURG - Analyst Conference](#)
- [GBK - Transcript of Analyst Conference](#)

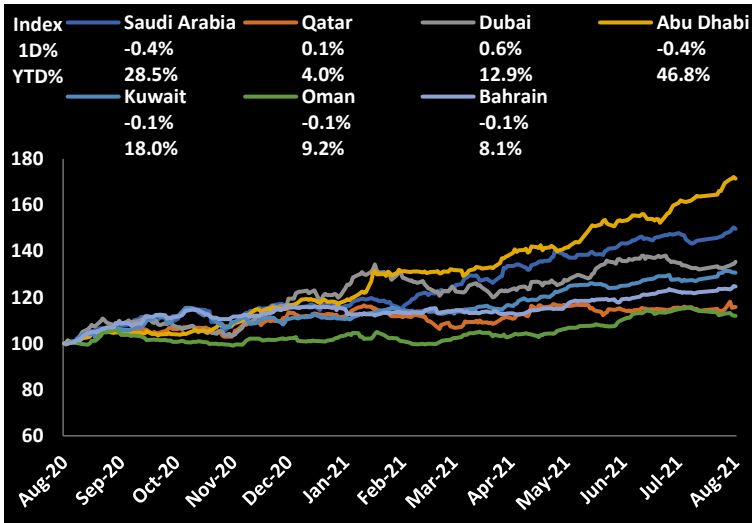
Source: Boursa Kuwait

### All Share Index (1-Year Performance)



**Value Traded** 58.98 mln **Compared to 1Y Daily Avg** 10.8%

### GCC Bourses



Source: Publicly available market data

### Major Global Indices

Indices	Last Price	1D%	WTD%	MTD%	YTD%
DJ Industrial	34,792.67	-0.9	-0.4	-0.4	13.7
S&P 500	4,402.66	-0.5	0.2	0.2	17.2
Nikkei225	27,584.08	-0.2	1.1	1.1	0.5
Hang Seng	26,426.55	0.9	1.8	1.8	-3.0
FTSE 100	7,123.86	0.3	1.3	1.3	10.3
CAC 40	6,746.23	0.3	2.0	2.0	21.5
MSCI World	3,085.83	-0.2	0.5	0.5	14.7
MSCI Emg	1,303.99	0.8	2.0	2.0	1.0

Source : Publicly available market data

### Major Commodities / Currencies

	Last Price	1D%	WTD%	MTD%	YTD%
Gold (\$/MT Ounce)	1,814.50	0.0	-0.1	-0.1	-4.4
Silver (\$/Troy Ounce)	25.46	-0.5	-0.3	-0.3	-3.9
Brent Crude Oil (\$/BBL)	70.38	-2.8	-7.8	-7.8	35.6
OPEC Oil (\$/BBL)	72.71	-1.6	-2.3	-2.3	43.2
EUR/USD	0.845	0.2	0.3	0.3	3.7
USD Index	92.28	0.3	0.1	0.1	2.6
JPY	109.50	0.4	-0.2	-0.2	6.0

Source : Publicly available market data

### Market Calendar

Date	Day	Company Name	Event
5-Aug	Thursday	MABANEE	<a href="#">BoD Meeting</a>
5-Aug	Thursday	AZNOULA	<a href="#">BoD Meeting</a>
5-Aug	Thursday	AAYANRE	<a href="#">BoD Meeting</a>
5-Aug	Thursday	TIJARA	<a href="#">BoD Meeting</a>
5-Aug	Thursday	ASC	<a href="#">BoD Meeting</a>
5-Aug	Thursday	WINS	<a href="#">BoD Meeting</a>

Source: Boursa Kuwait

### Daily Top Gainers

Stock (Fils)	Last Price	52 Week High	Low	1D%	YTD%	Value (KD'000)
WARBACAP	67.2	80.0	41.5	7.9	37.1	19.5
BOURSA	1,730.0	1,730.0	990.0	6.9	57.3	3,111.1
ALAQARIA	37.3	49.0	21.0	6.6	49.2	0.0
AMAR	60.0	80.0	39.1	5.3	22.4	49.2
KMEFIC	159.0	184.0	107.0	4.6	30.3	8.1

### Daily Top Losers

Stock (Fils)	Last Price	52 Week High	Low	1D%	YTD%	Value (KD'000)
KHOT	66.2	111.0	50.1	-13.0	10.3	0.0
BAREEQ	38.0	102.0	14.1	-6.6	-42.4	1,446.1
SANAM	72.0	78.0	27.0	-5.3	105.7	94.6
SPEC	108.0	118.0	58.0	-4.4	38.5	314.1
HAYATCOMM	83.0	94.0	41.0	-3.6	48.2	33.8

### Daily Volume Leaders

Stock (Fils)	Last Price	1D%	YTD%	Volume ('000)
MAZAYA	90.6	-2.0	58.9	67,714
BAREEQ	38.0	-6.6	-42.4	36,539
AUB	249.0	1.6	9.7	27,310
ARZAN	171.0	3.0	205.4	21,063
INJAZZAT	75.3	2.6	0.4	15,193

### Daily Value Leaders

Stock (Fils)	Last Price	1D%	YTD%	Value (KD'000)
AUB	249.0	1.6	9.7	6,770
MAZAYA	90.6	-2.0	58.9	6,103
KFH	781.0	-0.6	15.4	5,913
ARZAN	171.0	3.0	205.4	3,571
AGLTY	968.0	-1.7	43.2	3,401

Source: Boursa Kuwait (for all tables and charts on page 2)

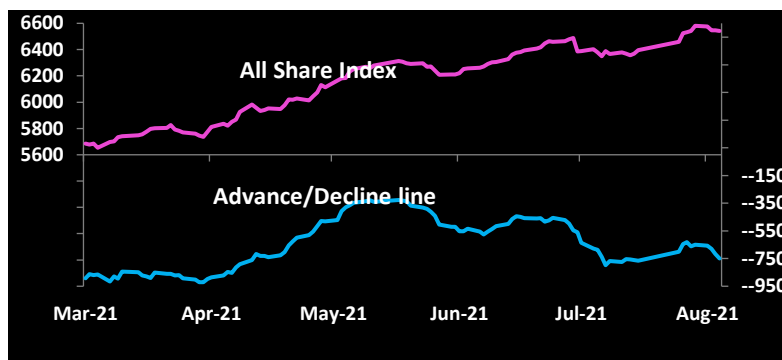
### Stocks Trading Near 52 Weeks High

Stock (Fils)	Last Price	52 W High	% Below 52 W High	Value (KD'000)
BOURSA	1,730.0	1,730.0	0.0	3,111.1
AUB	249.0	250.0	-0.4	6,769.6
NBK	888.0	898.0	-1.1	2,885.3
ARZAN	171.0	173.0	-1.2	3,570.7
ALMUTAHED	301.0	305.0	-1.3	76.5

### Stocks Trading Near 52 Weeks Low

Stock (Fils)	Last Price	52 W Low	% Above 52 W Low	Value (KD'000)
NAPESCO	860.0	855.0	0.6	9.3
AZNOULA	225.0	220.0	2.3	219.8
FUTUREKID	67.0	65.2	2.8	21.3
RKWC	63.0	61.0	3.3	5.7
STC	855.0	822.0	4.0	612.7

### Market Breadth

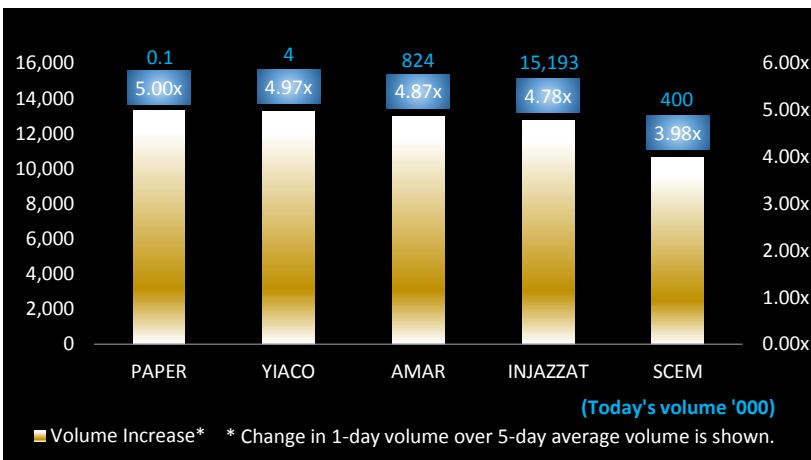


Advancing Volume	124.6 Mln	Advancing Shares	56
Declining Volume	179.0 Mln	Declining Shares	60
Unchanged Volume	27.2 Mln	Unchanged Shares	21

### New High / Low

1D	1W
4	13
1	1

### Volume Trending Stocks

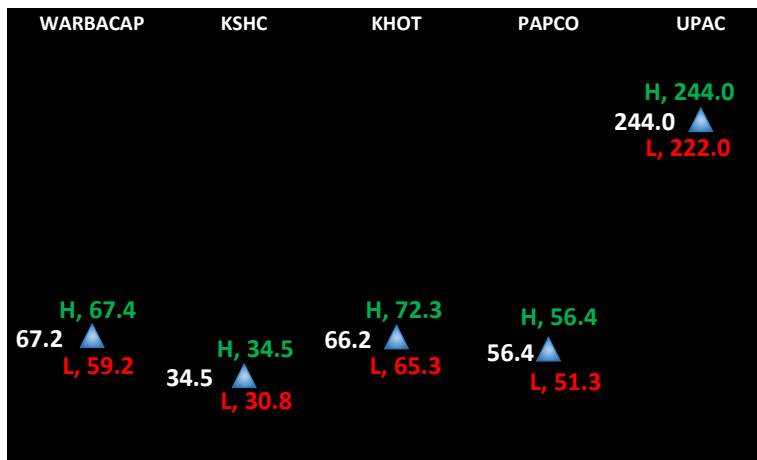


### Sectoral Valuation Multipliers

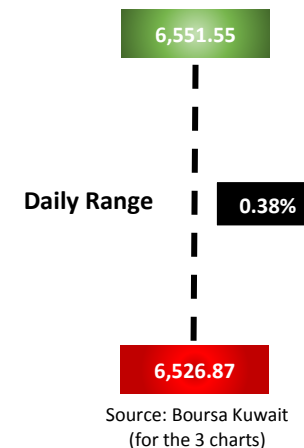
Sector/Indices	Market Cap (KD Mln)	Weight (%)	P/E (TTM)*#	P/BV (TTM)*
All Share Index	38,386.00	100.00%	22.9x	1.7x
Premier Market	29,070.47	75.73%	25.8x	2.1x
Main Market	9,315.53	24.27%	14.8x	1.0x
BANKS	21,983.50	57.27%	30.7x	2.1x
FINANCIAL SERVICES	3,521.26	9.17%	9.2x	1.1x
REAL ESTATE	2,544.53	6.63%	33.9x	1.0x
INSURANCE	499.94	1.30%	9.7x	1.0x
INDUSTRIALS	4,071.39	10.61%	23.5x	1.3x
BASIC MATERIALS	956.97	2.49%	26.1x	1.4x
CONSUMER STAPLES	232.75	0.61%	17.2x	1.5x
TELECOMMUNICATIONS	3,311.30	8.63%	15.1x	1.8x
ENERGY	296.06	0.77%	17.8x	1.1x
TECHNOLOGY	10.30	0.03%	24.1x	0.9x
HEALTH CARE	161.06	0.42%	34.6x	2.5x
CONSUMER DISCRETIONARY	549.44	1.43%	19.6x	1.6x
UTILITIES	247.50	0.64%	20.1x	3.5x

Source : Boursa Kuwait and KIC Research \*Based on data as on TTM 31.3.2021 # Market cap weighted, excluding companies with negative earnings

### Stocks with Highest Daily Price Range (Fils)



### All Share Index



### Sectoral Performance

Sectoral Indices	Last Price	1D%	WTD%	MTD%	YTD%	Advances / Declines Ratio	Volume Traded / 5-day Avg Vol
All Share Index	6,542.51	-0.1	-0.6	-0.6	18.0	0.93	0.94
Premier Market	7,120.86	-0.1	-0.6	-0.6	17.7	1.00	0.90
Main Market	5,409.88	-0.1	-0.5	-0.5	18.8	0.92	0.95
BANKS	1,487.78	-0.1	-0.9	-0.9	17.8	0.60	1.05
FINANCIAL SERVICES	1,236.54	0.9	1.6	1.6	33.0	1.27	0.86
REAL ESTATE	1,210.53	0.0	0.1	0.1	27.1	0.85	0.99
INSURANCE	1,393.00	-0.9	-0.8	-0.8	20.5	0.50	1.88
INDUSTRIALS	1,146.09	-0.9	-1.2	-1.2	28.6	1.09	1.01
BASIC MATERIALS	1,073.04	0.2	-0.4	-0.4	19.4	0.50	1.04
CONSUMER STAPLES	763.93	0.3	-1.0	-1.0	-6.7	N/M	0.82
TELECOMMUNICATIONS	1,079.93	0.0	-0.9	-0.9	-2.0	0.25	0.89
ENERGY	1,420.85	0.3	0.3	0.3	11.2	1.50	0.58
TECHNOLOGY	749.33	0.0	-1.0	-1.0	49.1	N/M	1.68
HEALTH CARE	800.47	0.0	0.0	0.0	-3.2	N/M	4.96
CONSUMER DISCRETIONARY	1,024.44	-0.2	-1.1	-1.1	37.3	0.67	0.91
UTILITIES	592.11	0.0	-0.9	-0.9	-18.8	N/M	0.96

Source : Boursa Kuwait

## Kuwait Investment Co. (K.S.C.P)

5<sup>th</sup> Floor, Souk Al-Manakh, Mubarak Al-Kabir Street, Sharq, Kuwait

P.O. Box 1005, Safat 13011, Kuwait

Tel: (+965) 1888852 (+965) 22967000

Email: [research@kic.com.kw](mailto:research@kic.com.kw)

Websites: [www.kic.com.kw](http://www.kic.com.kw) / [www.kictrade.com](http://www.kictrade.com)



### Disclaimer:

This document and material contained herewith have been produced, compiled, and issued by Kuwait Investment Company- KIC (K.S.C.P.). Kuwait Investment Company is a public shareholding company, incorporated and domiciled in the State of Kuwait, and is regulated by the Central Bank of Kuwait (CBK) and Capital Markets Authority (CMA) as an investment and finance company. The Company has obtained the information used in this document from sources it believes to be reliable, but the issuer does not guarantee, neither its accuracy nor completeness, nor provides an independent verification of the material contained therein. KIC may, from time to time to the extent permitted by law, participate or invest in other financing transactions with the issuers of the securities, perform services for or solicit business from such issuer and/or have a position or effect transactions in the securities or options thereof. KIC may, to extent permitted by the applicable Kuwaiti Law or other applicable laws and regulations, effect transactions in the securities before this material is published to recipients. The opinions and estimates expressed herein are those of the issuer and subject to change at any time without any prior notice. Accordingly, no representation or warranty, expressed or implied, is made as to and no reliance should be placed on the fairness, accuracy, completeness or correctness of the information and opinions contained in this document. KIC accepts no liability for any loss arising from the use of this document or its contents or otherwise arising in connection therewith. This document should not be relied upon or used in substitution for the exercise of sound judgment. KIC shall have no responsibility or liability whatsoever in respect of any inaccuracy in or omission from this or any other document prepared by KIC for, or sent by KIC to any entity, and any such entity shall be responsible for conducting its own scrutiny, investigation, and analysis of the information contained or referred to in this document and of evaluating the merits and risks involved in the securities forming the subject matter of this or other such document.

Opinions and estimates constitute KIC's judgment and are subject to change without prior notice. Past performance is not a reliable indicator of future results. This document does not constitute an offer or invitation to subscribe for or purchase any securities, and neither this document nor anything contained herein shall form the basis of any contract or commitment whatsoever. This document is not an offer to sell or a solicitation to buy any securities. It is being furnished to the reader solely for his/her information and may not be redistributed inside Kuwait or by any jurisdiction outside Kuwait where this action is restricted by law. Entities who receive this report should make themselves aware of and adhere to any such restrictions. By accepting receipt of this report, the reader agrees to be bound by the foregoing limitations.